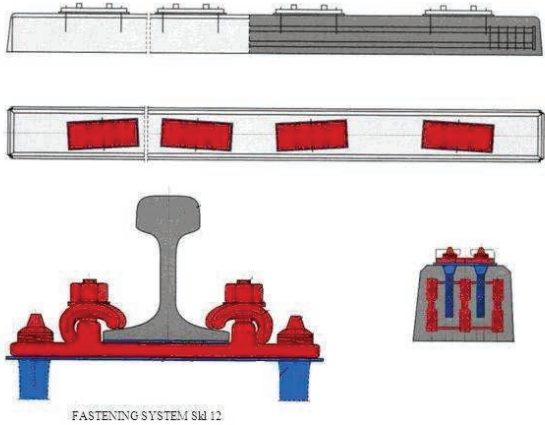


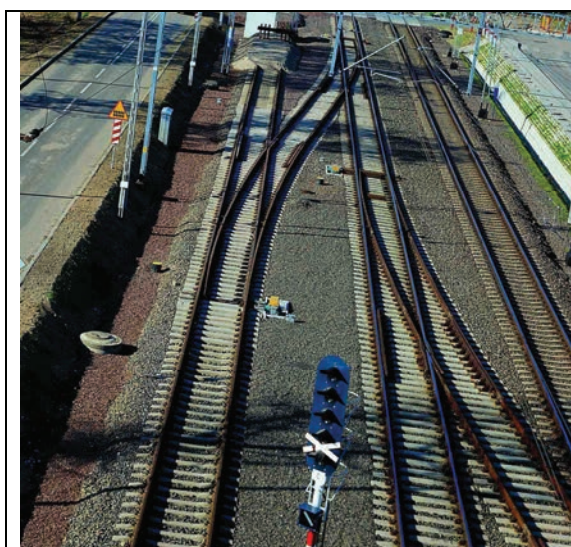
BEARERS FOR SWITCHES AND CROSSINGS

<p>Standard elements:</p>	<p>Typs:</p>
 <p>FASTENING SYSTEM SKL 12</p>	<p>PS-93</p> <p>DIMENSION Total length of bearer 2400 mm - 4900 mm Width of the bearer at the bottom rail seat 290 mm Width of the bearer at the top rail seat 220 mm Total height of the bearer to the top of the rail seat 220 mm</p> <p>TECHNICAL DATA Nominal axel load 225 kN Maximum speed 250 km/h Bearer mass 152 kg/lm Rail seat inclination 1: ∞ Fastening system Skl 12</p>

Design and installation guide line:

The bearers for switch sleepers of SP 93 type is assigned for railway turnouts and track crossing. Its function is to transmit the load from the rails subgrade. It maintains an adequate location of rails and other railway crossovers elements towards each other. Switch sleepers are intended for function of right and left turnouts of R190, R300, R500 and R1200 type. It can be also applied for other type of turnouts in accordance to customer requests.

Example:



References and contacts:

Installed since 1995 at the main railway line networks and at the high priority lines which are in the management on Polish State Railway (PKP) companies.

Manufactured by:
 WPS S.A. Mirosław Ujski POLAND
wps@wps-sa.com.pl